



**WORLD
TAEKWONDO**
Partnership Taekwondo Program



2026 OUTLINE

PROGRAM OUTLINE & PARTICIPATION GUIDE

1-8 JULY 2026 | MUJU TAEKWONDOWON, KOREA



Table of Contents



- 4** Introduction
- 5** Eligibility Criteria
- 6** Dates & Venue
- 7** Program Schedule
- 8** Accommodation & Transportation
- 9** Application & Registration Process
- 10** Additional Information
- 11** Conclusion & Contact Information

Message from the President of World Taekwondo



Dear Taekwondo Family,

The World Taekwondo Partnership Taekwondo Program, jointly organised by the Taekwondo Promotion Foundation with the support of the Ministry of Culture, Sports and Tourism, is a prestigious global initiative offering **advanced Kyorugi and Poomsae** training delivered by world-renowned instructors.

Beyond technical development, the program fosters cultural exchange, bringing together practitioners from around the world to learn, share, and grow together.

This initiative reflects World Taekwondo's strong commitment to education, elite training, and international collaboration, and continues to inspire athletes, coaches, and practitioners worldwide.

I wish all participants a rewarding and memorable experience at Muju Taekwondowon, as they pursue technical excellence while strengthening the global Taekwondo community through harmony, respect, and shared growth.

Chungwon Choue
President of World Taekwondo

Introduction

The Partnership Taekwondo Program, promoted by World Taekwondo and organised by the Taekwondo Promotion Foundation, is designed to strengthen technical standards, promote cultural exchange, and support long-term capacity building within the global Taekwondo community.

Through structured training and shared learning environments, the program brings practitioners from different regions together, fostering mutual respect, cooperation, and a deeper understanding of Taekwondo's core values.



TECHNICAL DEVELOPMENT

Advanced Kyorugi and Poomsae training under WT-aligned methodologies.



CULTURAL EXCHANGE

Engagement with Korean culture and Taekwondo heritage.



EDUCATIONAL VALUES

Reinforcing the principles and values underpinning Taekwondo.



ACCESSIBILITY

Participation supported without an attendance fee.

Eligibility Criteria

ELIGIBILITY

REQUIREMENTS

MNA Recommendation

Applicants must submit a **formal recommendation letter** issued by a World Taekwondo-recognised Member National Association (MNA) from their country of nationality or residence. **Priority** will be given to applicants endorsed by their respective MNAs.

Age Requirement

Applicants must be at **least 16 years of age** in the calendar year in which the program is held and must be physically capable of participating in all practical training components.

Taekwondo Qualification

Preference will be given to applicants holding a Taekwondo black belt, with the **highest priority** accorded to **Kukkiwon-certified black belt** holders.

Nationality

Applicants must be nationals of countries eligible for **Official Development Assistance (ODA)** under the OECD DAC list and must be nominated by the Member National Association (MNA) of that country.



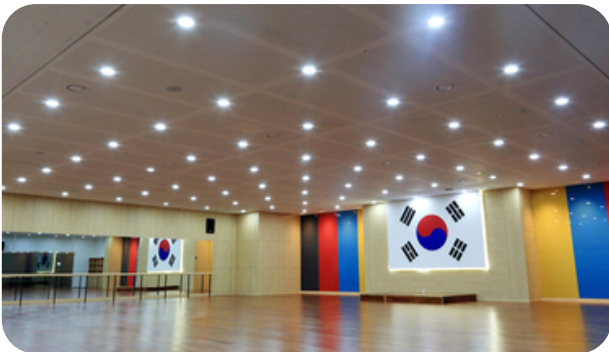
The current **list of eligible countries** can be found on the OECD website:

<https://www.oecd.org/dac/financing-sustainable-development/development-finance-standards/daclist.htm>

Dates & Venue

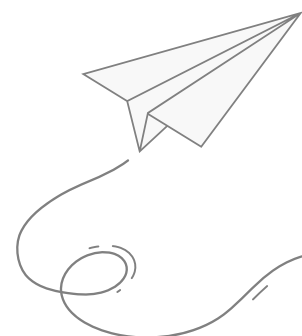
The **2026 Partnership Taekwondo Program** will take place at **Muju Taekwondowon**, located at 1482 Museol-ro, Seolcheon-myeon, Muju-gun, Jeonbuk-do, Korea.

The program includes eight (8) training days, with additional arrival and departure days.



PROGRAM DETAILS



- **Arrival:** 30 June 2026
- **Program Period:** 1-8 July 2026
- **Departure:** 9 July 2026



Program Schedule

The following schedule is provided as an indicative reference for the **2026 Partnership Taekwondo Program**.

The detailed daily programme may be adjusted in accordance with operational requirements and will be confirmed and shared with participants prior to the start of the program.

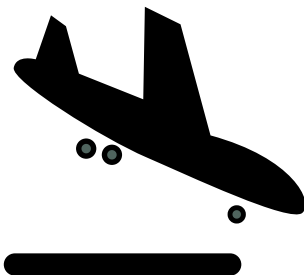
	Arrival Day	Day 5	Introduction to Kyorugi
<ul style="list-style-type: none"> • Arrival and check-in 		<ul style="list-style-type: none"> • Outdoor conditioning activity • Basic Kyorugi & Tactical Training 	
Day 1	Core Foundations	Day 6	Applied Kyorugi & Conditioning
<ul style="list-style-type: none"> • Orientation & Opening Ceremony • Introduction to WT & Taekwondo 		<ul style="list-style-type: none"> • Intensive Conditioning • Controlled Sparring & Jump Rope 	
Day 2	Poomsae Development	Day 7	Technical Expression Training
<ul style="list-style-type: none"> • Basic Taekwondo movements • Colour and Black Belt Poomsae 		<ul style="list-style-type: none"> • Jump Rope Conditioning • Specialised Kicking Techniques 	
Day 3	Creative Poomsae Training	Day 8	Team Activities & Conclusion
<ul style="list-style-type: none"> • Traditional Taekwondo Training • Free-Style Poomsae 		<ul style="list-style-type: none"> • Team-Based Physical Activities • Closing Ceremony 	
Day 4	Expression & Team Performance		Departure Day
<ul style="list-style-type: none"> • Taekwondo Choreography • Team Performance Showcase 		<ul style="list-style-type: none"> • Departure and check-out 	

Accommodation & Transportation



Travel Arrangements

- **Round-Trip Airfare:** Participants are responsible for their own flight arrangements.
- **Room and Board:** World Taekwondo covers accommodation and meals during the official programme period.
- **Guarantee Letter:** World Taekwondo does **not** issue guarantee letters.



Arrival at Incheon International Airport

- Participants must arrive by **15:00 on the Arrival Day** to use official transportation departing at **17:00**.
- Late arrivals may need to arrange transportation at their own expense.
- Travel time to Taekwondowon is approximately **3 hours**.
- Early arrivals may stay near the airport **at their own cost** (not covered by WT).



Departure from Incheon International Airport

- Flights should be booked **after 15:00 on the Departure Day** to use official transportation departing at **12:00**.
- Please allow at least 2–3 hours for airport check-in.

Application & Registration Process

Online Application Only

All applications must be submitted exclusively through the designated online application platform.



Click above to submit your application.

Registration Period

- Application Deadline: **30 April 2026**
- Late submissions will **not** be considered.
- Applications submitted via email or other channels will not be accepted.

Application Review & Notification

- Applications will be reviewed after the application deadline.
- Results will be communicated within two weeks of the application deadline.
- Notification will be sent directly by email following the document screening process.

Important Notes

- ⚠ Please ensure that all required documents are uploaded correctly at the time of submission.
- Once submitted, **no changes or additional documents** will be accepted.

Important Information

Traveller's Insurance

- All participants must arrange **their own travel insurance** prior to travel to Korea.
- The insurance should cover medical emergencies, accidents, and related risks.

Dobok & Belt

- Each participant will receive one dobok from World Taekwondo.
- Participants must bring **their own belt (according to rank) and one additional Dobok** for training and activities.

Time Table

- A detailed program timetable will be provided at the start, including training sessions, cultural activities, and other events. Participants are encouraged to familiarise themselves with the timetable for full participation.

Certificate

- A Participation Certificate will be awarded at the end of the program in recognition of the successful completion of the program.

Conclusion & Contact Information

The 2026 Partnership Taekwondo Program aims to further strengthen technical capacity, international exchange, and sustainable development.



For program-specific enquiries,

Including participation, travel arrangements, visa support, and on-site logistics, please contact: ptp@worldtaekwondo.org.

For general enquiries related to World Taekwondo Development & Education program,

Please visit www.worldtaekwondo.org or contact development@worldtaekwondo.org.



2025 Program Highlights

A highlight video from the 2025 program is available via the link or QR code below, showcasing key activities, training sessions, and participant experiences.



2025 WTPTP Highlight – Phase 1



2025 WTPTP Highlight – Phase 2

Please scan or click the QR code above to watch the video.